

SRP
Stewart-Rose Properties

OFFICE / WAREHOUSE LEASE

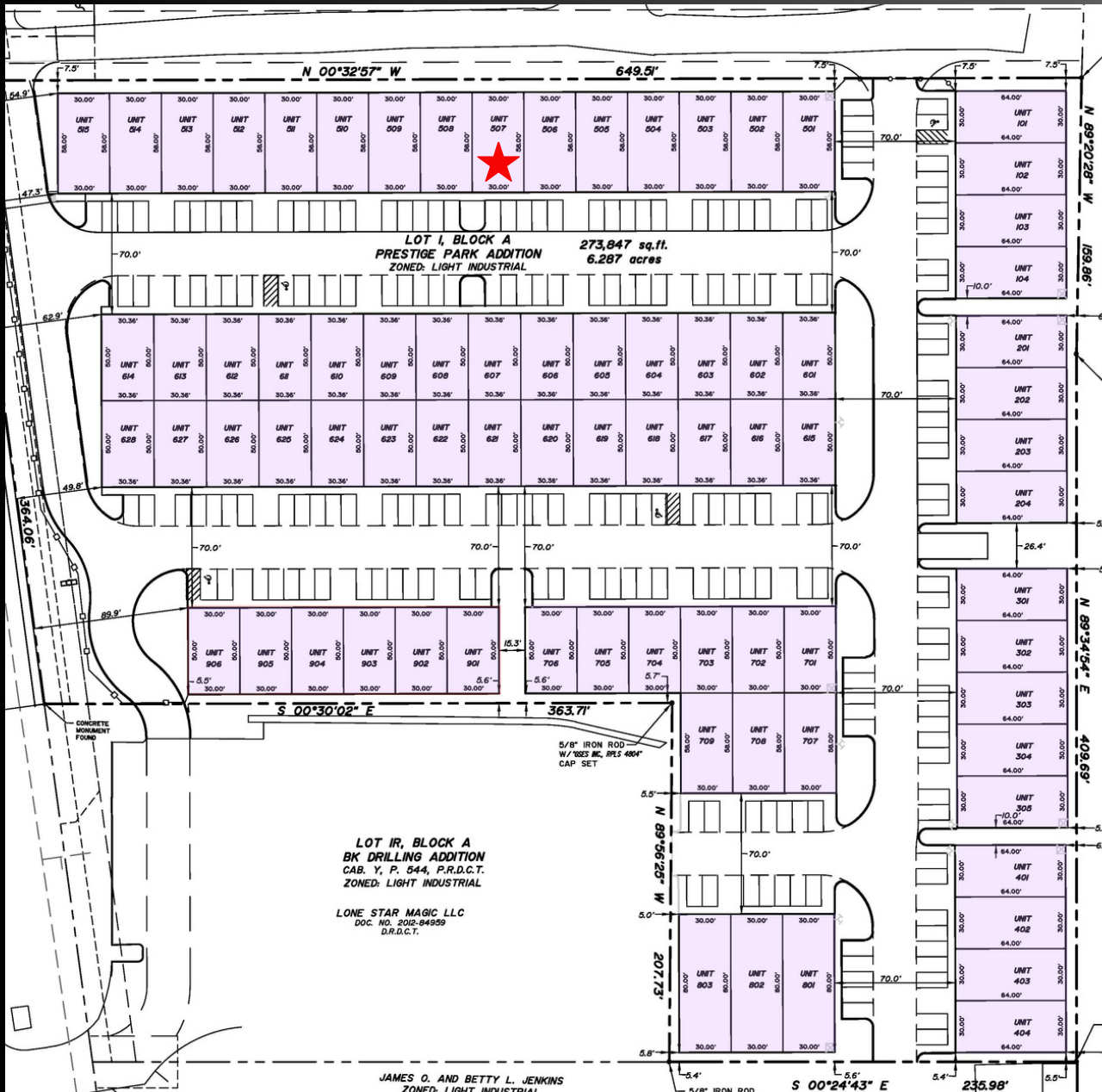


**985 E. State Hwy 121 Business
Lewisville, TX**

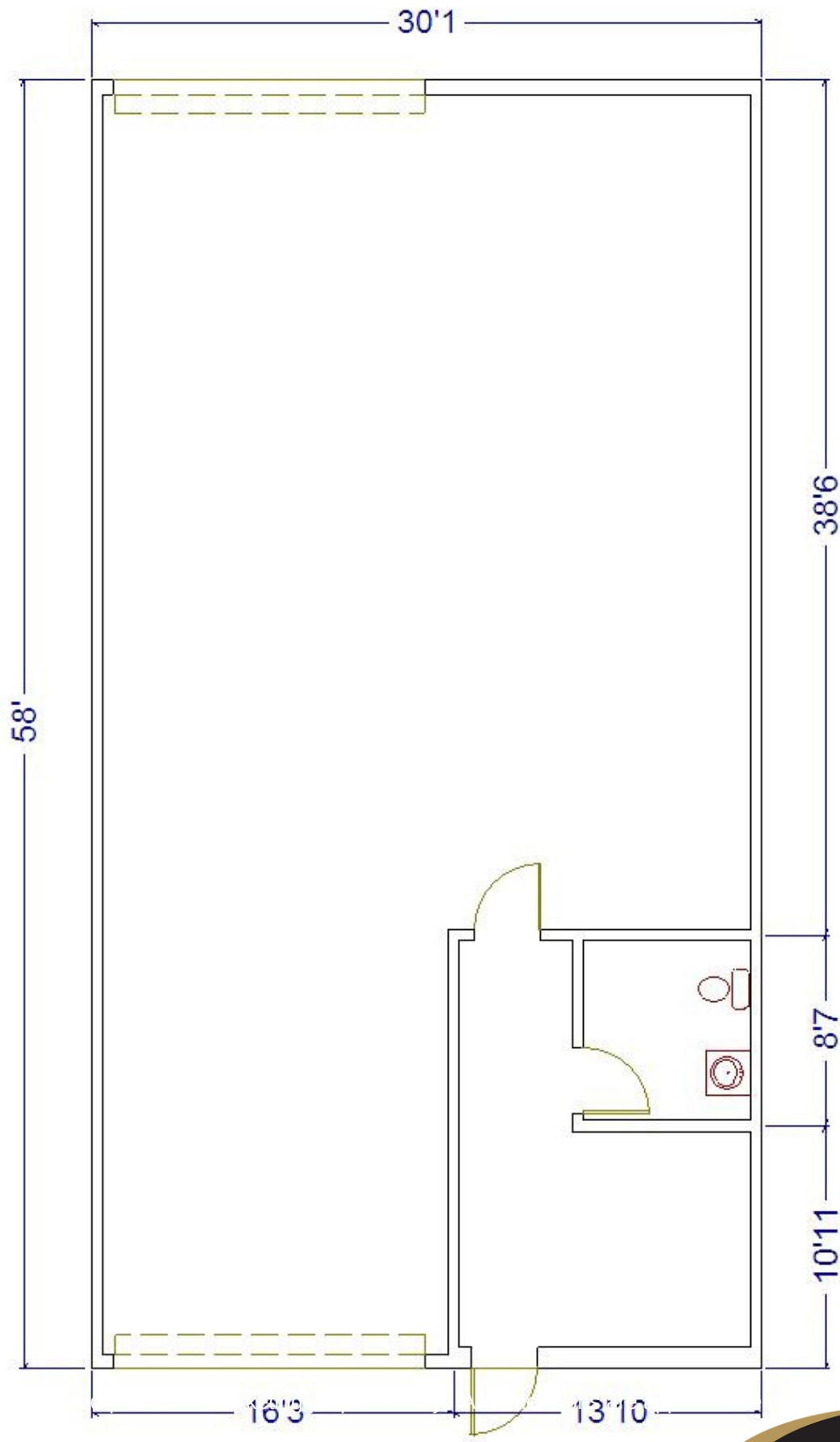
BUILDING 5, SUITE 507

- 1,740 SF AVAILABLE
- 200 AMP, 3 PHASE POWER
- 20' - 24' CEILING HEIGHT
- 14 X 14 BAY DOORS (2)
 - FIRE SPRINKLERS
- DRIVE THROUGH BAY DOORS

Larry Rose Jr.
Mobile: 972-921-7579 // Office: 940-365-3470
Larry@s-rp.com



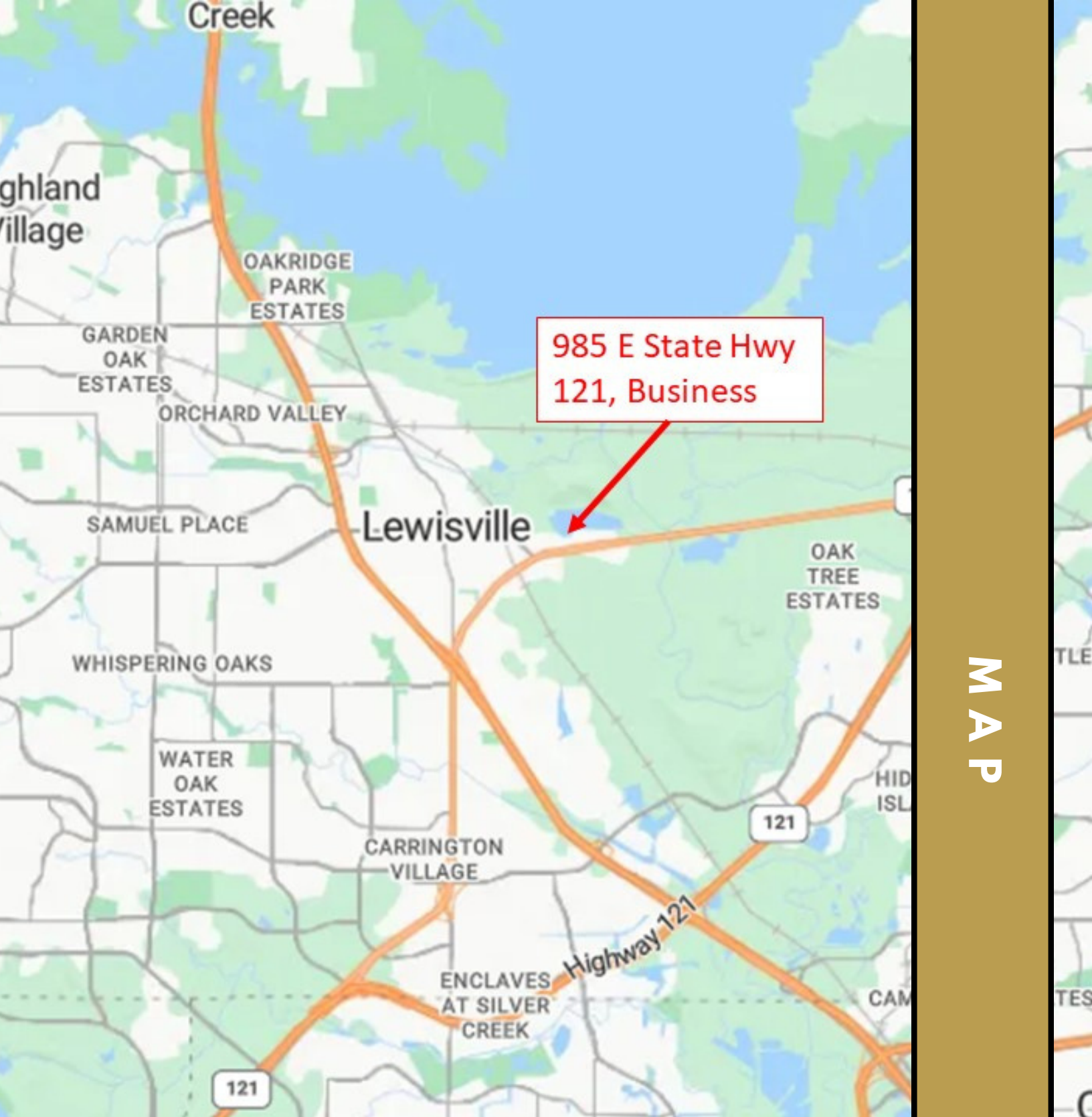
Larry Rose Jr.
 Mobile: 972-921-7579 // Office: 940-365-3470
 Larry@s-rp.com



FLOOR PLAN



Larry Rose Jr.
 Mobile: 972-921-7579 // Office: 940-365-3470
 Larry@s-rp.com



M A P

[Click here for Driving Directions](#)



Larry Rose Jr.
Mobile: 972-921-7579 // Office: 940-365-3470
Larry@s-rp.com