

SRP

Stewart-Rose Properties



419 SOUTHFORK, Suite 102 LEWISVILLE, TX

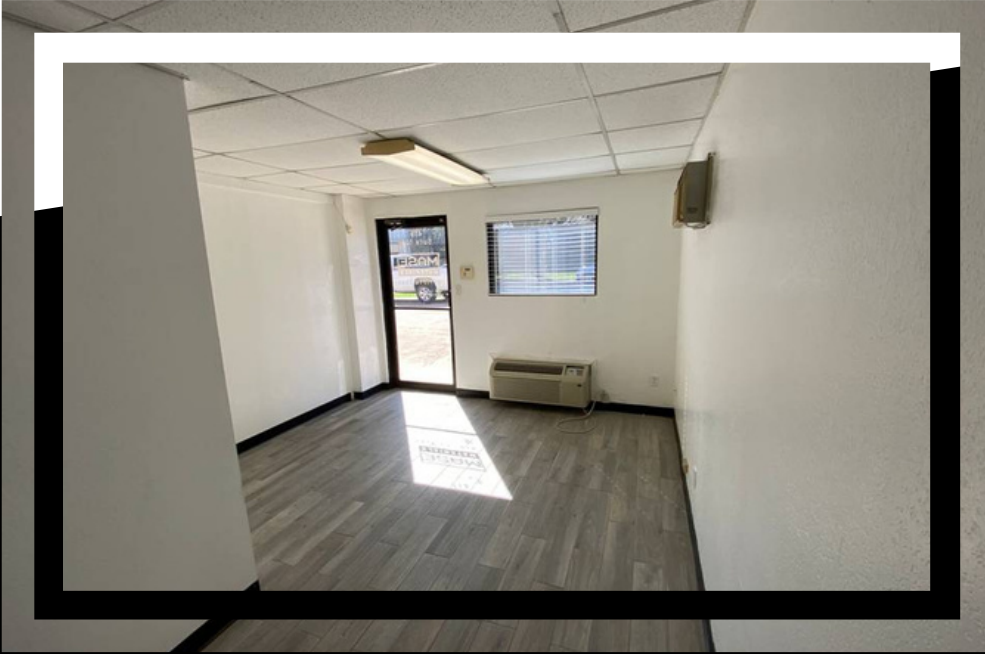
- 1500 SF AVAILABLE
- APPROX. 180 SF OFFICE
- 12H X 10W OVERHEAD DOOR (1)
 - ONE RESTROOM
- 2-3 PARKING SPACES
- NO AUTOMOTIVE

Larry Rose Jr.
Mobile: 972-921-7579 // Office: 940-365-3470
Larry@s-rp.com

OFFICE / WAREHOUSE LEASE

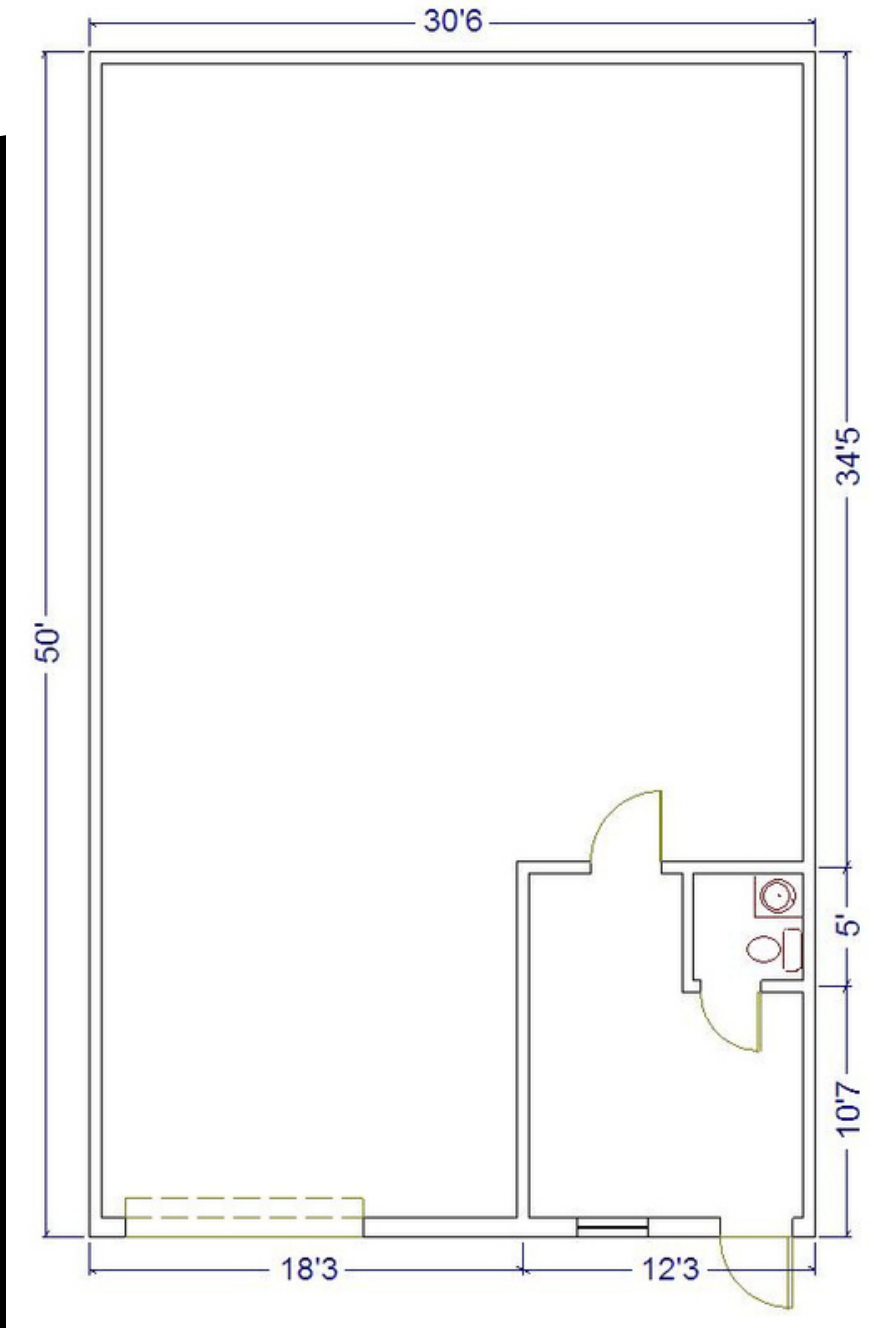
SRP

Stewart-Rose Properties



INTERIOR PICTURES

Larry Rose Jr.
Mobile: 972-921-7579 // Office: 940-365-3470
Larry@s-rp.com



FLOOR PLAN

Floor plan is for marketing purposes only.
All dimensions are approximate.

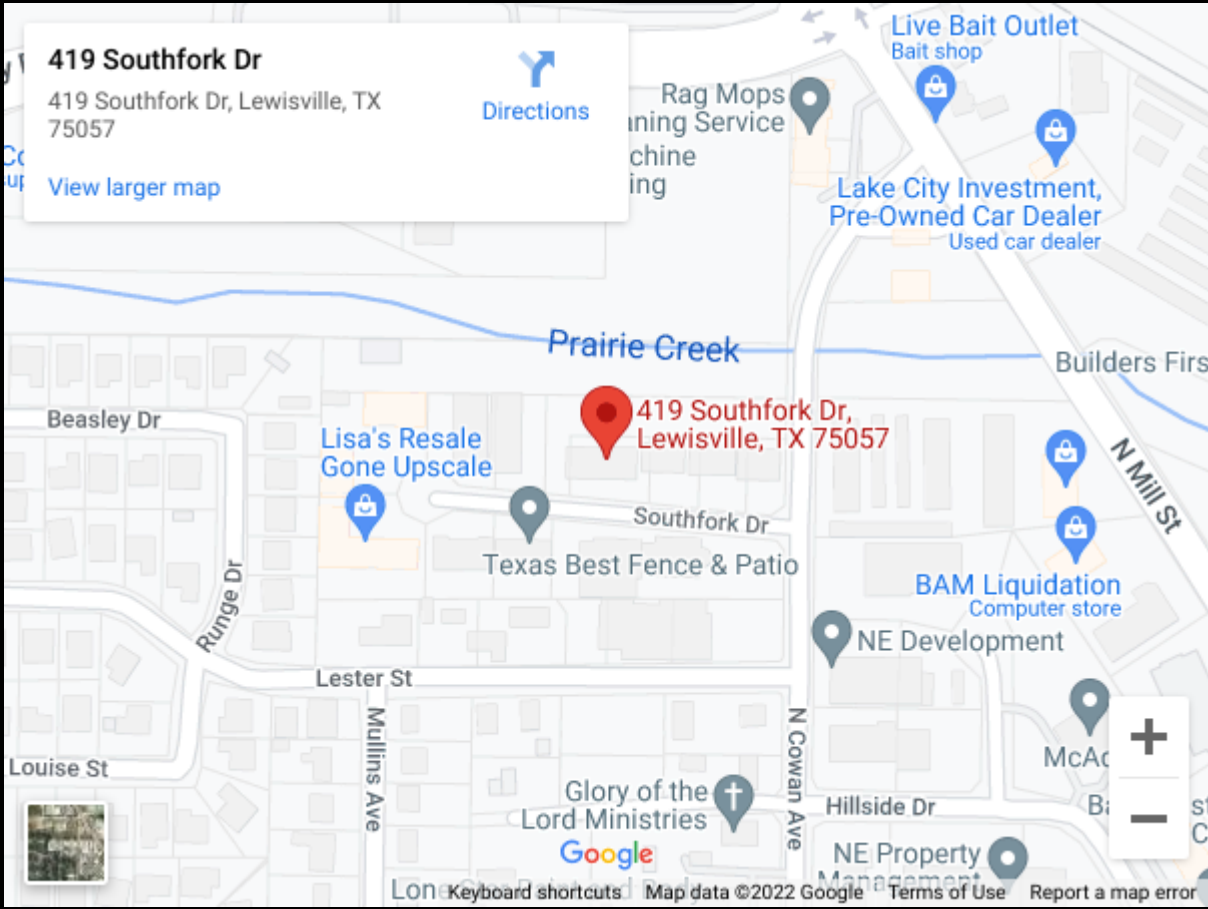
Larry Rose Jr.

Mobile: 972-921-7579 // Office: 940-365-3470

Larry@s-rp.com



[CLICK HERE FOR DIRECTIONS](#)



Larry Rose Jr.
Mobile: 972-921-7579 // Office: 940-365-3470
Larry@s-rp.com